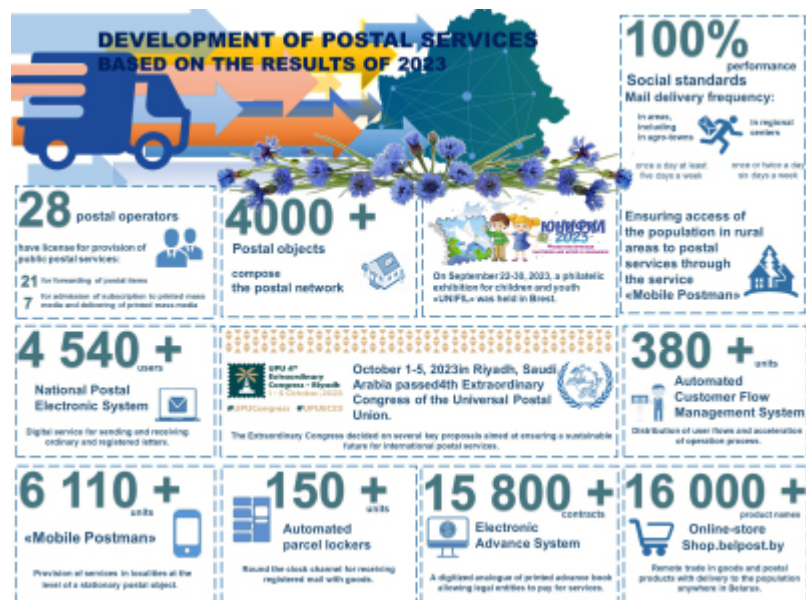




Currently the postal network of the Republic of Belarus consists of more than 4 000 postal objects



In the Republic of Belarus, a license for public postal services for forwarding of postal items and subscription to printed media and its delivery is provided to **28 postal operators**, including 21 of them to forwarding of postal items, and 7 of them to accepting print media subscriptions and delivering it.

Among the innovations and achievements in the field of postal communication services implemented recently on the basis of IT-technologies that contribute to improving the quality of life support for the population has been the development of the national postal electronic system, the expansion of the network of post offices, the introduction of the «Mobile Postman» service and an electronic advance system for legal entities.

The **National Postal Electronic system** is a convenient and fast way of sending simple and registered letters in electronic and hybrid form with confirmation of the fact of delivery. The number of registered users in the system is more than **4 540** users.

An **Electronic Advance System** for legal entities is a digitized analogue of a paper advance book, which allows for on-line crediting and debiting of funds for postal services, as well as paying for a wide range of postal services. The number of concluded contracts for the provision of services using the electronic advance system is more than **15 800** pieces.

The **Mobile Postman** service allows you to automate the work of postmen/postal couriers and provide settlements, including rural areas, with modern postal services based on information and communication technologies. Currently, there are more than **6 110 units** operating in the Republic of Belarus.

In order to develop an additional round-the-clock channel for receiving postal services, increase the level of customer service and reduce the waiting time for receiving registered mail, the network and

functionality of automated **parcel lockers** (self-service devices) continues to expand. The network of automated parcel lockers of the Republic of Belarus currently consists of more than **150** units.

An **Automated Customer Flow Management System** allows you to distribute the flow of postal service users and speed up the process of servicing them in postal facilities. Currently, this system operates in more than **380** postal facilities.

In the Republic of Belarus, state social standards are fully implemented in terms of the frequency of mail delivery and ensuring access of the population in rural areas to postal services provided by the national postal operator through the «Mobile Postman» service.

The development of **the online postal store Shop.belpost.by** continues, the main task of which is the distance trade of goods and postal products with delivery to the population anywhere in Belarus, as well as to more than 40 foreign countries. The official website of the national postal operator presents the products of more than 300 manufacturers/suppliers and contains more than **16 000** items of goods.

From 1 to 5 October 2023, the **IV Extraordinary Congress of the Universal Postal Union** (UPU) was held in Riyadh, Kingdom of Saudi Arabia.

The Extraordinary Congress has decided on several key proposals aimed at ensuring a sustainable future for international postal services. The delegation of the Republic of Belarus at the Congress was headed by the Deputy Minister of Communications and Information of the Republic of Belarus Natalya Mikhailovna Gordeenko.

From September 22 to September 30, 2023, **a philatelic exhibition for children and youth «Unifil-2023»** was held in Brest.

The exhibition featured 55 collections from participating countries: Azerbaijan, Armenia, Belarus, Israel, Kyrgyzstan, Russia, Serbia.

The youth philatelic exhibition is a place where young talented people can gain new knowledge, communicate with experts in their industry, meet peers, and exchange experiences and ideas.

Source URL:

<https://mpt.gov.by/currently-postal-network-republic-belarus-consists-more-4-000-postal-objects>